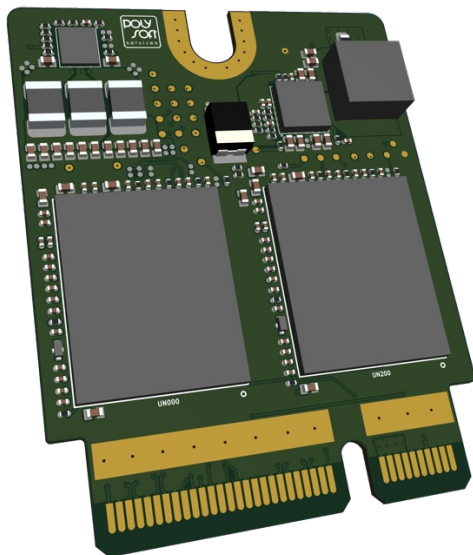


Studio Drive M3 Ultra installation manual



READ FIRST - SSD PAIRING

At the factory, your Mac Studio has been "software bounded" to an SSD card.

Upgrading your Mac Studio with the Studio Drive will "unbound" your Mac Studio from the original SSD, so it is **mandatory to make a backup**

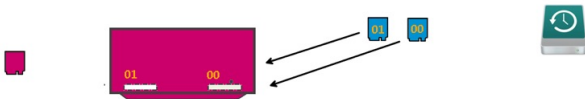
1 - Backup your data



2 - Remove your original Apple SSD



3 - Install the Studio Drive kit



4 - Software bound your Mac Studio and the new Studio Drive together



5 - Restore your backup



6 - You now have a upgraded, working Mac Studio, and a spare original SSD that is still working but is no longer bounded to your Mac Studio (data is unreadable).



What if you want to put back your original SSD ?

If, for whatever reason, you want to put your original Apple SSD back in your Mac Studio, it won't work straight away because this last one will have been "bounded" to the Studio Drive disk in the meantime.



You need to logically "rebound" your Mac Studio with its original Apple SSD again :



Your Mac Studio is now tied again to your original SSD, you can then restore your backup :



1 - Safety warnings and requirements



ALWAYS REMOVE AC MAINS PLUG BEFORE OPENING YOUR MAC STUDIO

To carry out the physical installation of the Studio Drive, you will need :

- a clean and flat workspace
- your Mac Studio
- the Studio Drive kit
- the supplied iFixit Minnow toolset (with Torx T6 - T8 - T10 bits)
- the nylon tool probe supplied

To logically pair your Mac Studio with the Studio Drive, you will need :

- an USB-C power delivery cable
- a second Mac

This second mac can be an old one, but it needs either be running at least macOS 14.1, or have a running Apple Configurator 2 application, which may be not available from your Mac App Store account if you've never downloaded it before.



2 – Bottom cover removal

Start by turning your Mac Studio upside down.

Force the nylon probe under the black plastic screw cover :



Then move around the nylon tool to unstick the circular screw cover :



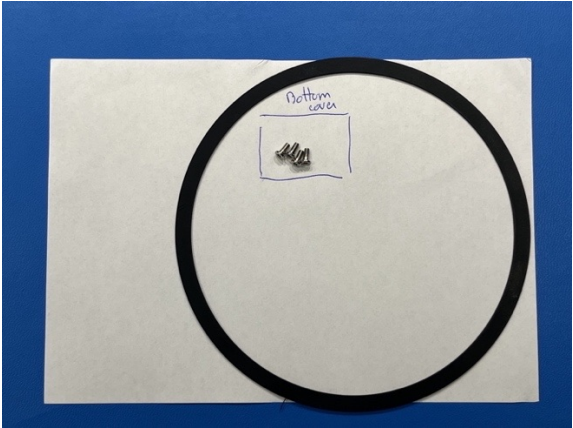
You can now lift the circular screw cover. On the M3 Ultra Mac studio, the screw cover adhesive can be reused so please don't damage it.



Remove the 4 screws from the bottom cover using the T10 bit and screwdriver :



We recommend you to use a sheet of paper to store and organize the screws as you go along with the disassembly :



Remove the bottom cover by lifting it up using the nylon probe :



MAKE SURE THAT AC POWER PLUG IS REMOVED BEFORE GOING FURTHER

3 – Power supply removal

Remove the bus bar screw cover by lifting it off using the nylon probe tool :

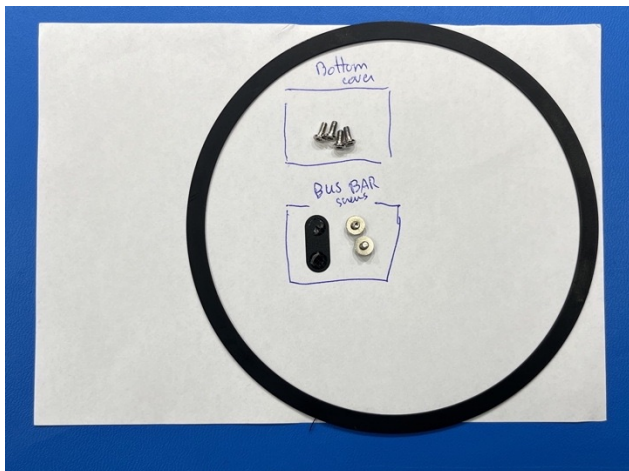


Then remove the 2x bus bar screws using the T10 bit and screwdriver :



Please note that these screws use a T10 “Plus” footprint. The iFixit kit we supplied contains only “regular” T10, which isn't ideal but works anyway.

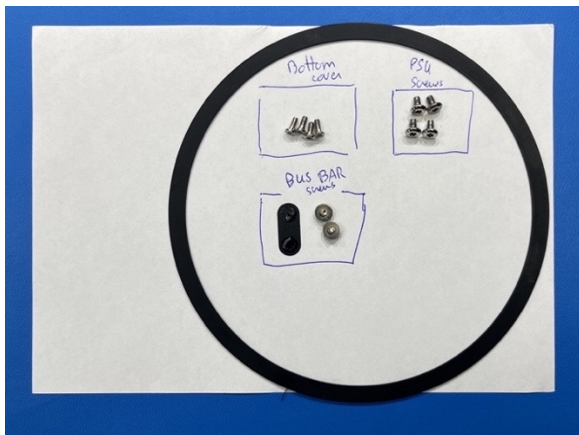
Store the BUS BAR screws and cover separately from the others :



You can now remove the 4x T10 Plus power supply screws :



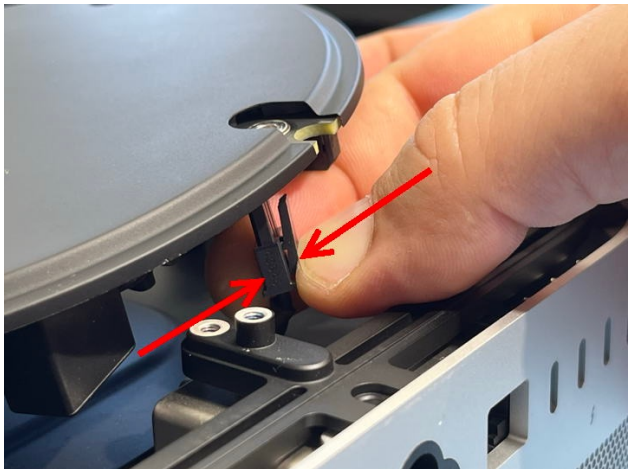
Store the 4x power supply screws separately from those of the BUS BAR :



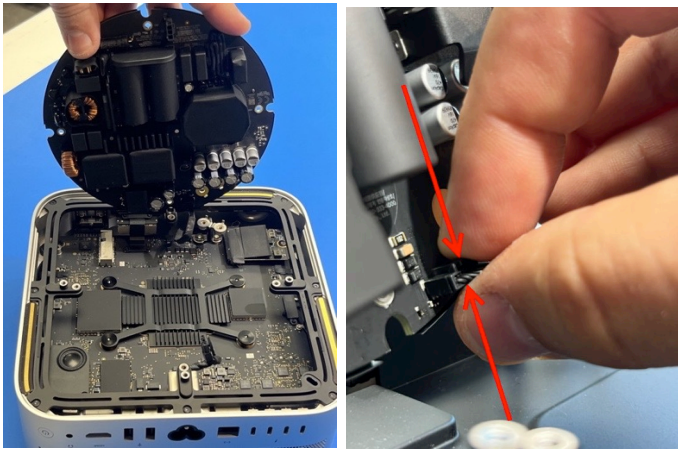
Next, you can gently lift the power supply, but **ONLY** by a few centimetres, **please** start by lifting the **BACK** of the power supply, and be careful not to lift too much or you'll damage the connector !



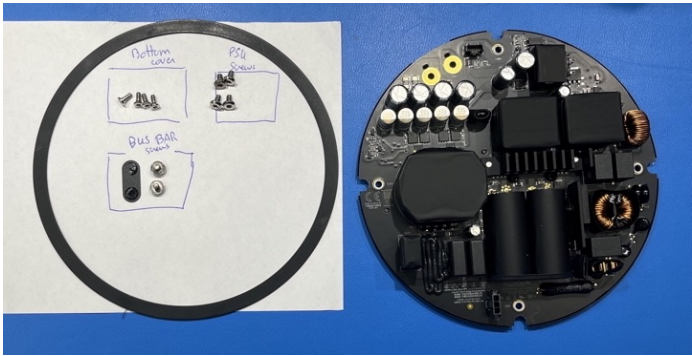
Pinch the clip on the AC cable and remove it from its connector :



Fully lift up the power supply unit, pinch the data signal cable clip and pull it out of its connector, **please be careful not to rip the data signal connector !**



Store the power supply unit for later :



4 – Frame removal

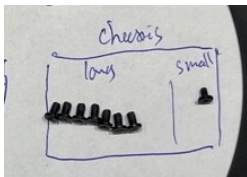
Using a T6 bit and screwdriver, remove the 7x long screws around the frame :



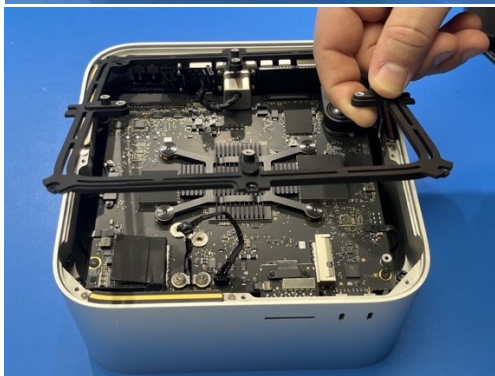
Remove separately the shorter 8th screw which is above the mains socket :



Store the 7x long screws and the shorter one separately :

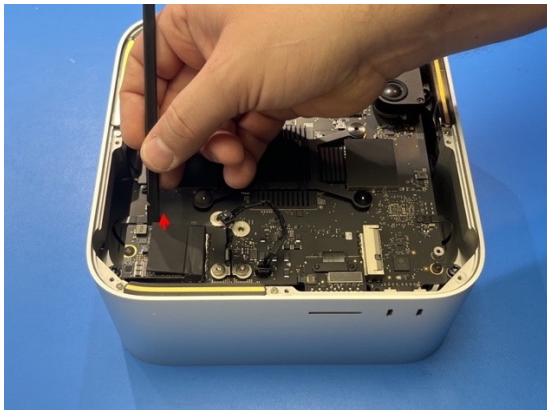


You can now lift up the frame :

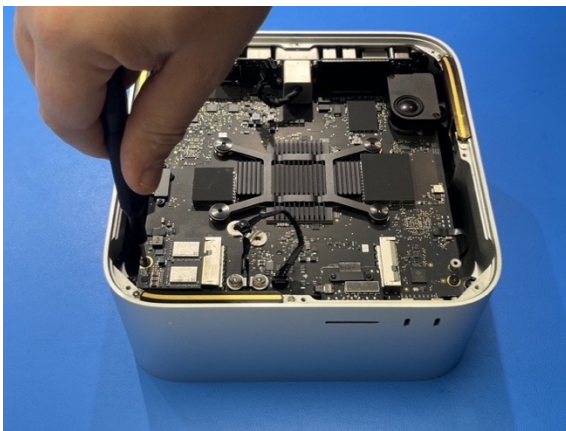


5 – SSD modules installation

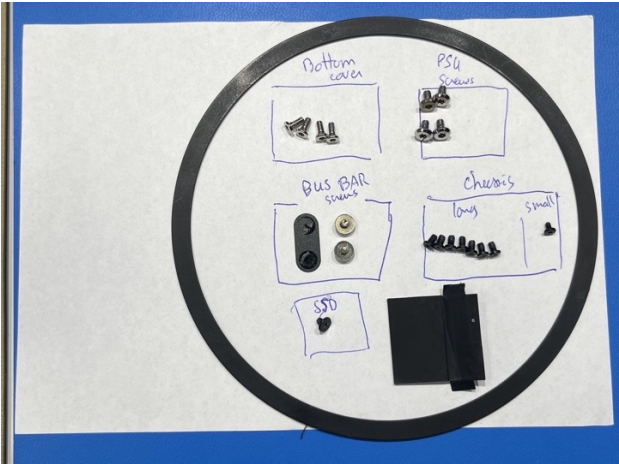
Remove the old SSD cover using the nylon probe tool :



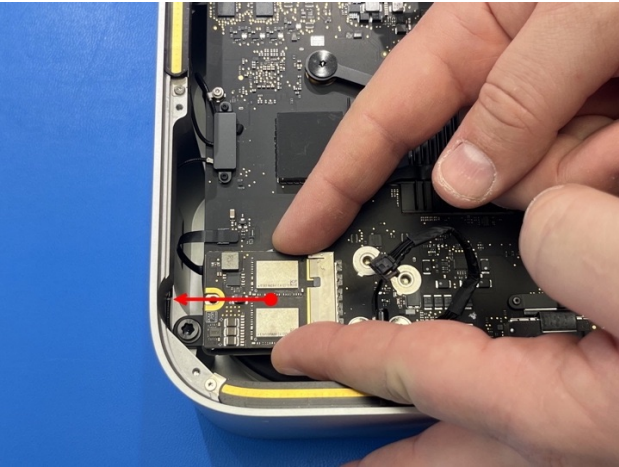
Remove the T8 screw using T8 bit and screwdriver :



Store the SSD screw for reuse :



Remove the old SSD by gently sliding it sideways :

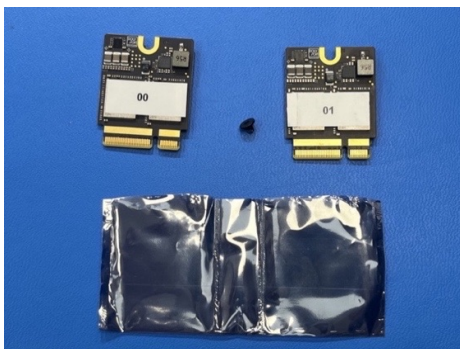


You can now unpack your Studio Drive kit from its antistatic bag :





The 2TB kit is only 1 card which goes in slot 00, while the 4TB, 8TB and 16TB kits consist of 2 cards going in slot 00 and 01, with a new screw for the 2 card :

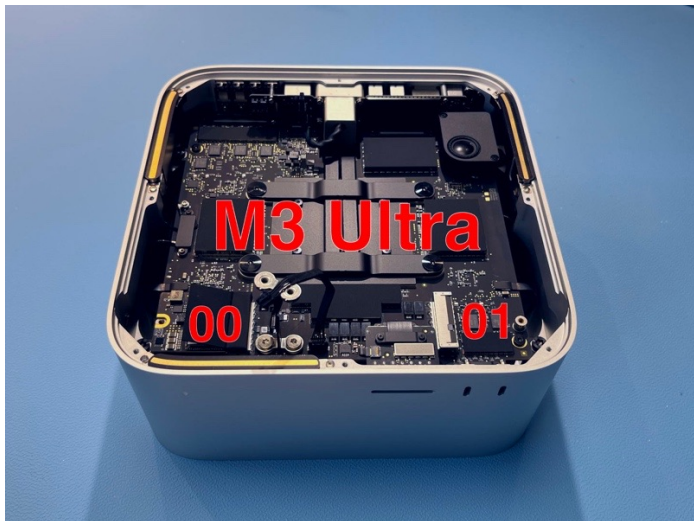


You will now install the new Studio Drive storage cards.

Please check that the connectors are clean and, if necessary, clean them with a lint-free cloth and isopropyl alcohol.



when the M3 Ultra Mac Studio is upside down with front facing you
slot 00 is on the LEFT, slot 01 is on the RIGHT



Place the new Studio Drive "00" module by gently sliding it sideways into slot 00 :



for 4TB, 8TB and 16TB kits, install the 2nd module in slot 01 :



Replace the SSD screws with T8 bit and screwdriver :



for 4TB, 8TB and 16TB kits, use the supplied new screw for the second module :



6 – Frame reinstallation

Replace the frame. Be sure to position the Kensington lock on the opposite side from the front USB-C ports :



Tighten the 7x long screws with the T6 bit and screwdriver :

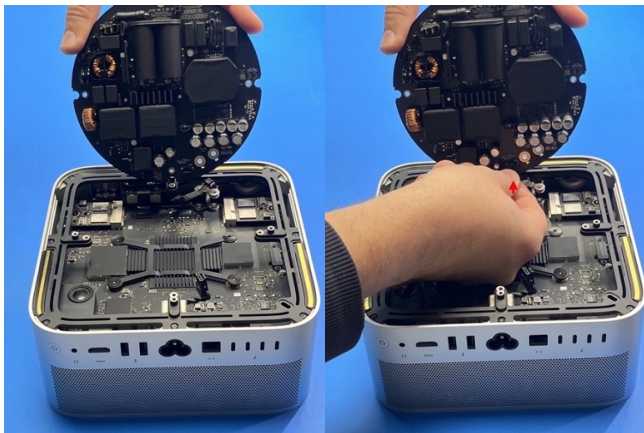


Finish by the short screw on top of the AC socket :



7 – Power Supply reinstallation

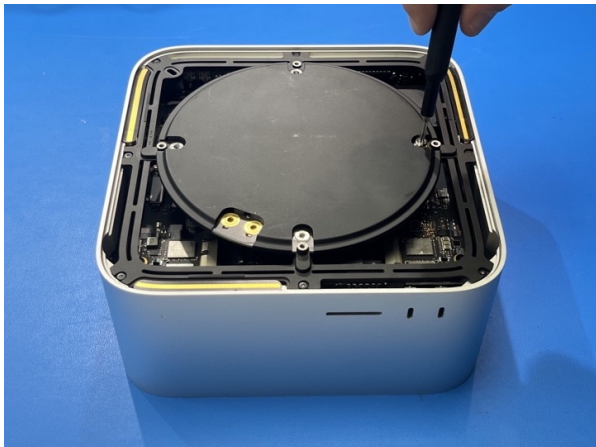
Reinstall the Power Supply Unit by first holding it on edge at the front of the Mac Studio, then reconnect the data signal cable :



Carefully lower the power supply unit into place and reconnect the AC power cable:



Tighten the T10 Plus power supply screws :



Tighten the T10 Plus bus bar screws, **please tighten them firmly otherwise the Mac Studio will not fully power on :**

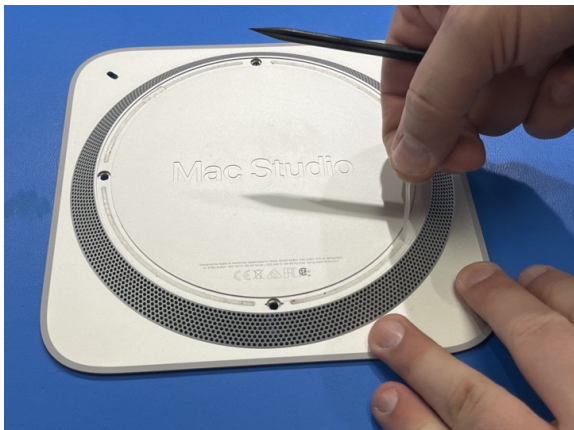


Replace the bus bar screw cover :



8 – Bottom cover reinstallation

The adhesive of Mac Studio M3 back cover is reusable. If ever it has been removed, put it back in place :



Place the bottom cover back, adjust it sideways, and tighten the T10 bottom screws :



Then put the screw cover back on, making sure that the smoother surface faces upwards :



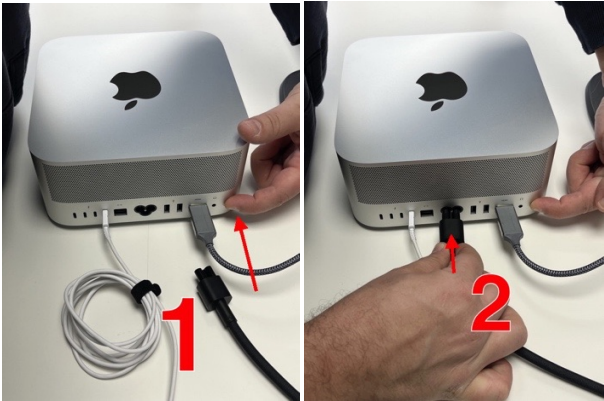
9 – Software restoration

Please place your Mac Studio and the 2nd Mac used to restore the software side by side. You need only :

- a monitor being plugged on the Mac Studio
- an USB-C Power Delivery cable between any port of the 2nd Mac and, on the Mac Studio side, the USB-C rear port closest to the RJ45 port



Now for the tricky part : place your Mac Studio in DFU mode. Do this by first pressing and holding the power button, and then and while still pressing the power button, plug the AC mains cable :



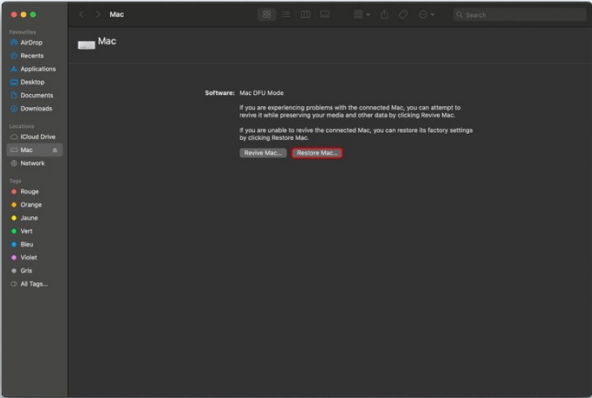
Your Mac Studio should start blinking "SOS" orange pattern, and the other Mac should detect it :



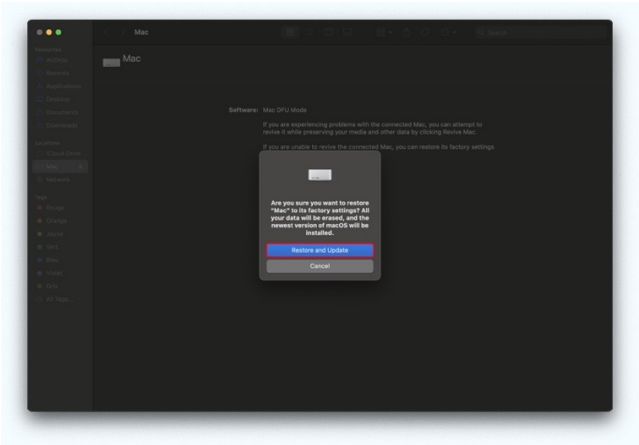
Please allow the connection to the Mac Studio in DFU Mode :



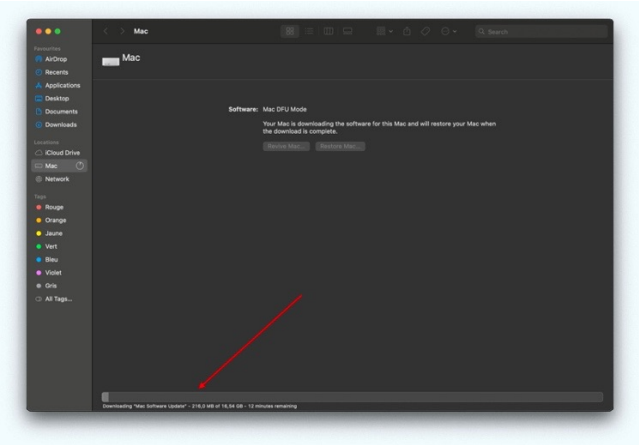
A Finder window appears, please clic on "Restore Mac" :



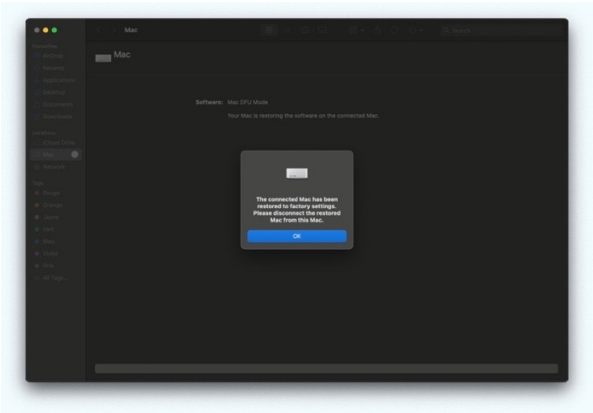
Confirm by clicking on “Restore and update” :



Wait for the process to complete, it never takes less than 15 minutes :



After the process is finished, your Mac Studio is up and running :



You can then restore your Time machine backup and enjoy your new storage capacity !

